

IMPACT



NOVEMBER 2020 | ANNUAL REPORT



GIVING BACK
STAYING STRONG

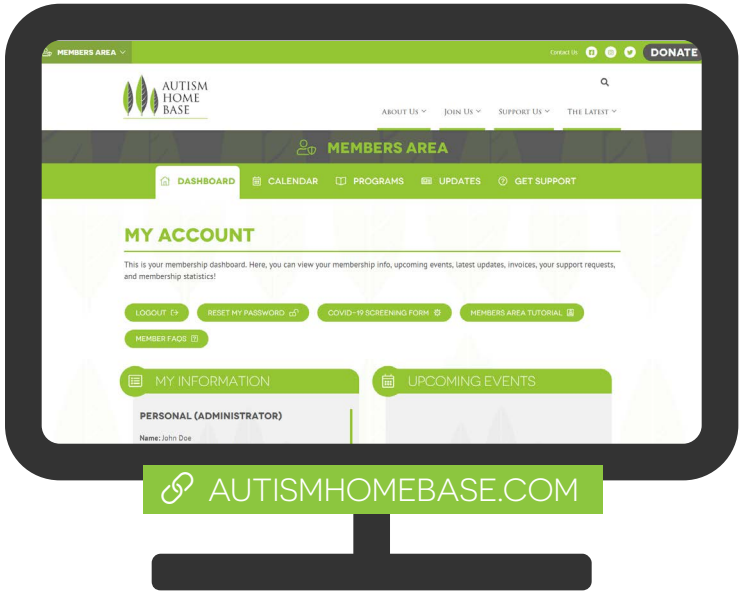
A NEW HOME

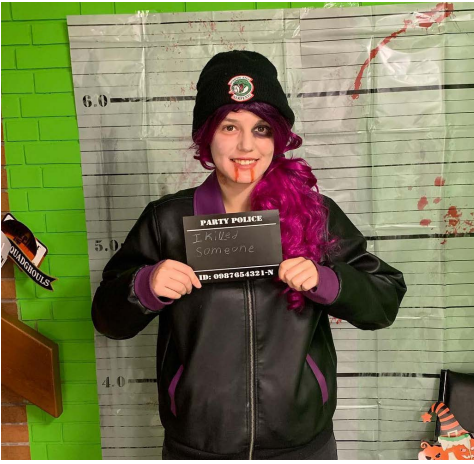
A PLACE WE ALL BELONG

This year was transformational. We opened an autism hub to hold many of our programs, drop ins, networking and learning events. It's a welcoming, judgement free space where adults on the spectrum are accepted and appreciated. What makes us unique, keeps us united.

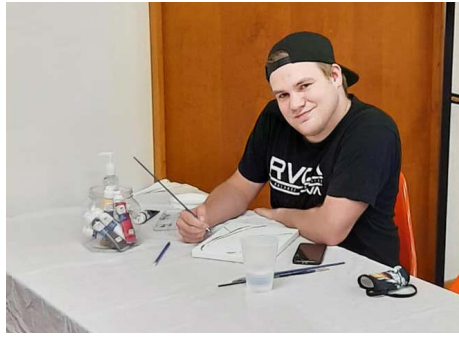
OUR WEB PRESENCE

A new upgraded website launched at the end of November. Now, members can better explore new interests, register for activities, track their participation, and celebrate milestones. Donors and volunteers have more options and can expect an experience that better reflects our gratitude.





AT THE HUB



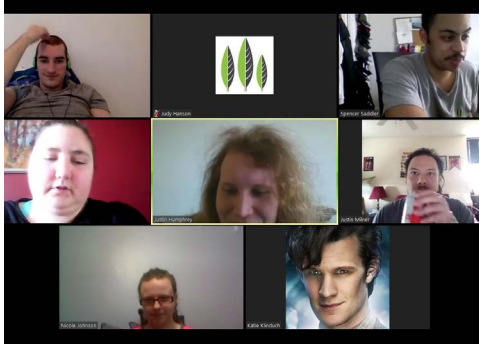
A JOYFUL LIFE

Our fun, interactive meet ups create opportunities to build lifelong relationships, expand our social networks, and develop new skills and interests.

Through 2020, participants enjoyed over 4,200 programming hours through 130 community based meet ups with an average of 14 participants per session. And 975 virtual programming hours for on average 6 participants per program.

Autism Home Base programming is driven by the lived experience of our members to reflect and respond to their unique challenges and gifts.

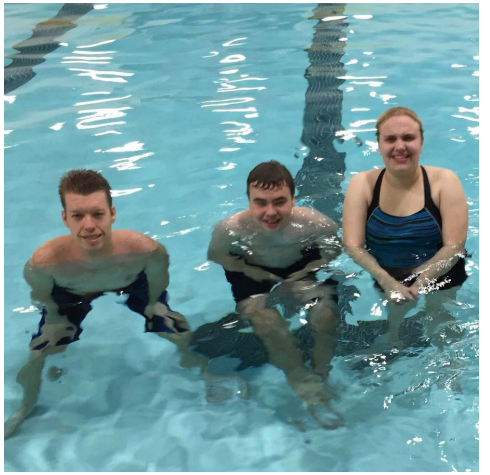
We offer arts, music, fitness, gaming, social, and wellness activities via video conference, in the community, and at our hub.



ONLINE



IN THE COMMUNITY



NEW INITIATIVES

BEST LIFE SYMPOSIUM

An extraordinary slate of subject matter experts, agencies, and small business service providers joined us for our virtual 2 day symposium. Discussions included estate planning, employment, and life planning tools and resources.

We are grateful for the generous contributions of the speakers and panelists, as well as our event sponsors.



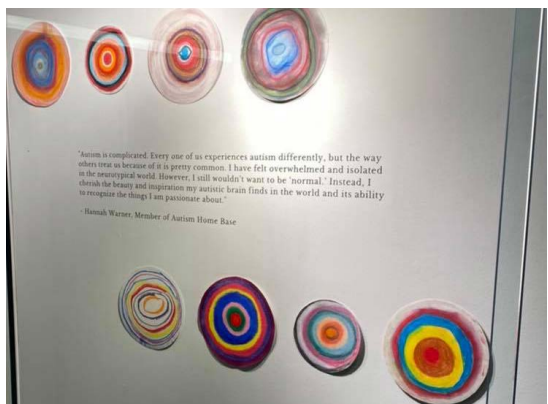
ART EXHIBITION

Throughout 2020, members prepared for a community exhibition centred on the theme of connection through shared interests and experiences. Pastel and collage works illustrated that what makes us unique also unites us.

The artworks were exhibited at the Robert McLaughlin Gallery in Oshawa this fall. They will be on display at our autism hub in 2021. A video compilation can be viewed on our [YouTube channel](#).

Thank you to all members who took part in this exhibition and shared their talents and stories.

Our gratitude also goes out to Hailey Yates (art instructor), Hannah Keating (RMG exhibition curator) and Tristin Haines (video producer).



RESPONDING TO COVID 19

The pandemic inspired creative solutions.

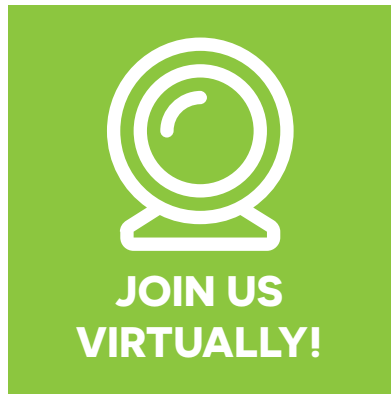
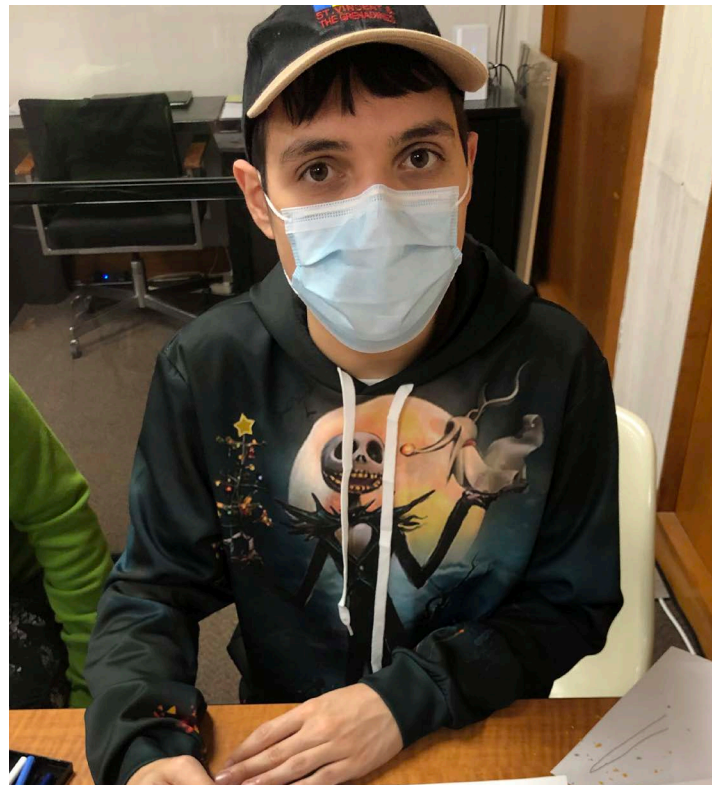
In mid March, we pivoted to offer Zoom programming 5 days a week including art, music, gaming, fitness, peer led discussion, and support groups. We created art, music, and sports kits for families to use at home. Community volunteers connected by telephone with members who were most vulnerable to social isolation.

Emergency government subsidies and special relief grants helped offset lost revenues from the cancellation of our annual April fundraiser. We are especially grateful for continued support from local service clubs, sponsors, and donors through these challenging times.

In August, our hub reopened to serve a limited number of visitors, 4 days per week with social distancing and safety protocols and equipment in place. Our Zoom programs continue with an option for in person participation at the hub. This is especially helpful for families who live remotely with spotty internet connections, and those individuals who have a harder time engaging via video conference.



HUB PROTOCOLS



A FOUNDATION FOR **SUCCESS**

Our 2020-2022 strategic plan calls for a focus on infrastructure to ensure we have the systems and policies in place to continue to grow while ensuring member experience remains at the forefront.

This year, the Board retained a non profit legal specialist and undertook a review of our bylaws. The previous bylaws worked great when we were only a few dozen families. Now, as we grow towards 200 participants there was concern about having enough voters for quorum at meetings to approve our annual filings.

A special meeting of members to adopt new bylaws was held on October 3rd with attendees joining in person, via Zoom, and by phone. The bylaws and amended articles were passed unanimously.

Going forward, 1% of total membership achieves quorum for members' meetings. Each family membership will have one vote. All members will be invited to attend, speak, and vote.

Members elect the Board, approve year end financials, and appoint the auditor at the annual meeting. Financial statements are available on request and on the CRA charity website.



BOARD OF DIRECTORS

Jessica Vreugdenhil, President
Terry Batley, Vice President
Linda Schrama, Treasurer
Lynne Lyon, Secretary
Gordon Humphrey, Director
Regional Councillor Joe Neal, Director

ANNUAL MEMBERS MEETING

Wednesday, February 17, 2021
6:30 pm
At the Hub or via Zoom

RSVP to boardsecretary@autismhomebase.com

PAL PROJECT



New this year, we invited volunteers to pair with members at our meet ups.

20 pairs were connecting monthly as part of a project funded by Ontario Trillium Foundation to assess our potential to expand circles of support for autistic adults.

When COVID hit in March, the project was interrupted. The pilot was redesigned to study the feasibility of telephone or online meet ups.

Not all original project participants had the capacity to continue virtually. However, of those that did, both volunteers and members expressed a positive experience, laying the groundwork for new partnerships with special interest clubs and volunteer mentors.

Trent University's research findings are available on our website.



MEMBERS GIVE BACK

Autism Home Base was created by families to serve other families. Members donate and take on various volunteer roles to keep our grassroots charity strong.

This year, 45 families made key contributions as: board members; presenters and advocates; program leaders; hub hosts; graphic designers; photographers and videographers; event organizers; fundraisers; and bingo runners.

Our hub was transformed with the sweat equity of our members who cleaned, painted, retrofitted, and helped with moving.



OUR SUPPORTIVE COMMUNITY

We are grateful for the contributions of government, business, and community leaders who have continued their generous support through this challenging year. We are especially grateful for covid emergency relief grants received through the Municipality of Clarington and Durham Community Foundation with Community Foundations of Canada.

In addition to financial support, our community lends their special talents, expertise and in kind service:

This year, that included:

- Furnishings from Tyler Tech
- Moving from Mackie Moving
- Plants from Rekker's Garden Centre
- Kitchen cabinets from Hugo & Borg
- Paint/painting from Home Depot Bowmanville Team
- Tech setup TS Interactive
- Plumbing from Unified Mechanical for plumbing
- Electrical from Stuart Group



AUTISM
HOME
BASE

Admin: 289 278 3489
Landline: 905 419 7900
info@autismhomebase.com

www.autismhomebase.com
f t i @autismhomebase

132 Church Street, 2nd Floor
Bowmanville ON
L1C 1T5



[AUTISMHOMEBASE.COM/DONATE](https://www.autismhomebase.com/donate)

A registered Canadian charity #81352 5797 RR0001

2020 EVENT AND PROGRAM SUPPORTERS INCLUDE

*Ontario Trillium Fdn.
Durham Community Fdn.
Municipality of Clarington
Canada Summer Jobs
ON Summer Employment Program
Harry Foster Foundation
City of Oshawa
Town of Whitby
Tribute Community
Ontario Power Generation
Elexicon Energy
360 Insights
UNIFOR Local 222
LiUNA Local 183
Rotary Club of Ajax
Bowmanville Rotary Club
Rotary Club of Pickering
100 Women Who Care
Ajax Pickering Whitby
Durham Regional Police
Nachas Homes
Trent University
Syvan Developments*

**Thanks to friends, donors,
and AutismAfter18 Society**

