

# Inclusive Student Services Impact Update

2024-2025 • Issue 7

## Deaf and Hard of Hearing Student Services

### Students Who are Deaf and Hard of Hearing

Hearing loss can affect one or both ears and can range from mild to profound levels. All hearing loss can impact a student's academic, social-emotional, and communication development. Hearing loss is determined by a clinical audiologist and documented on an audiogram during a hearing test.

Students who are D/deaf or hard of hearing require specific programming and/or support in the classroom. Students may:

- Exhibit a need for amplification,
- Have hearing loss which affects acquisition of language and academic accommodations,
- Have delayed speech and language development, and/or
- Require alternative form of communication.



### Teachers of the Deaf and Hard of Hearing (TODHH)—Who We Are

The DDSB employs nine educators supporting Deaf and Hard of Hearing students, nine ASL/English Interpreters, nine Deaf Blind Intervenors, and one Language Acquisition Support Worker (LASW). Together, this team offers services to over 250 students through school district Deaf and Hard of Hearing Services.

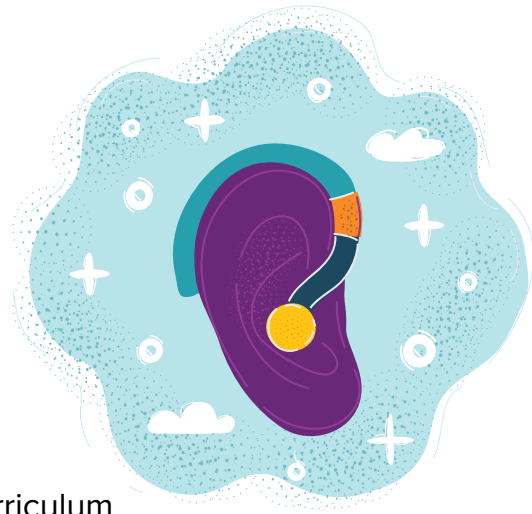
A referral to Deaf and Hard of Hearing Services is made through the school's Special Education Resource Teacher (SERT) when parent(s)/guardian(s) provide an audiogram from their audiologist.

***"Having a TODHH has made a huge difference in my life. Ever since I was little, I've had amazing teachers who made sure I had everything I needed to learn and feel confident. They've shown me that my hearing loss doesn't define what I can do, and because of them, I know I can succeed."***

***-Grade 10 student***

## What We Do

Students who are D/deaf and Hard of Hearing are diverse, encompassing a wide range of abilities, learning styles, and communication abilities. TODHH provide services to students to support language development, social, emotional and/or communication access. TODHH provide opportunities for specialized instruction in areas unique to deafness and reduced hearing from the expanded core curriculum (academic areas of reading, math, and writing), communication and language development, auditory and listening skill development, use of technology, self-determination and self-advocacy, social skills, deaf awareness, and transition (post secondary readiness, employment training, independent skills).



***“...With the assistance of the Hearing Resource Teacher, I am able to support my students in a more personalized and effective way, ensuring they can fully access the curriculum. The availability of the Hearing Resource Teacher has been invaluable.”***

***-Educator***

## Educational Audiologist

TODHH work alongside an Educational Audiologist, who reviews and evaluates the auditory and listening needs of Deaf and hard of hearing students. Together with the TODHH, the Educational Audiologist promotes communication access to support student participation and engagement.

## Families as Partners

High levels of family involvement contribute to positive results for children with hearing loss. Parents/caregivers have the right to be informed and engaged participants in their child’s educational program. TODHH support families in planning, decision-making, and transitions around accessibility in their child’s classroom and educational programming for their child through the Individual Education Plan (IEP).

***“The personalized support helped him gain confidence, access learning in a way that worked best for him and develop essential communication skills... This not only enhanced his academic progress but also empowered him to engage more fully with his peers, teachers, and the broader community.”***

***-Parent/Caregiver***

## Kids and Teens Like Me Days

TODHH are proud to promote specialized activities for students with hearing loss from Kindergarten to Grade 12 in our Kids and Teens Like Me Days. Activities promote socialization with other students who have hearing loss to make new friends, increase social skills, and enjoy educational opportunities that are fully accessible. Many of our students are the only ones with hearing loss in their school and these district events help students learn that there are others like them who share similar experiences.

## Students Who are Deaf Blind

Deafblindness is a unique and separate identification from deafness or blindness. An individual with the combined losses of hearing and vision requires specialized services including adapted communication methods. An Intervenor facilitates the interactions of a person who is deafblind with other people and the environment. They provide access to information, through auditory, visual, or tactile. Intervenor act as a sighted guide, teach appropriate communication methods (sign language, braille, object cues and communication boards), and assist with communication systems. Intervenor adapt the classroom teachers' programming to meet the needs of the student they support.



***“The support provided by the Deaf and Hard of Hearing teacher has had a tremendous impact on both my children’s educational experience in the DDSB. Individualized programming helps my children thrive by addressing their unique communication needs, while in-servicing classroom teaching staff foster a more inclusive environment. Additionally, the focus on peer education promotes understanding and the emphasis on self-advocacy empowers my children to confidently use their equipment independently.”***

*-Parent/Caregiver*



For more information about the DDSB Inclusive Student Services Impact Update, please visit [DDSB Inclusive Student Services](#).